

Dolphin

Wireless Stopwatch Timing System



Dolphin is a proven wireless timing system with a fully integrated Hy-Tek Meet Management interface.

Dolphin provides wireless stopwatch-style timing for swimming competitions. It significantly reduces the amount of effort required to run a meet and manage data. By transferring all timing data wirelessly, the system has improved accuracy compared to manual stopwatches.

Three modes of operation:

Electronic Synchronized Start/Manual Stop

Connect the starter unit to any CTS electronic start system. All watches will start timing with the start system signal. Each watch stops when the lane timer stops it. These times are wirelessly transmitted and saved for immediate access by Meet Manager.

Manual Synchronized Start/Manual Stop

The official with the starter unit starts all watches in conjunction with the whistle. Each watch stops when the lane timer stops it.

Manual Start/Manual Stop

This mode is used for collecting backup times at major events, and is compliant with all swimming ruling bodies' (FINA, NCAA, USS, NFHS, YMCA) requirements for backup timing. Lane timers start and stop the watches independently for a fully manual system.

In all three operation modes, finish times are wirelessly transmitted and recorded.

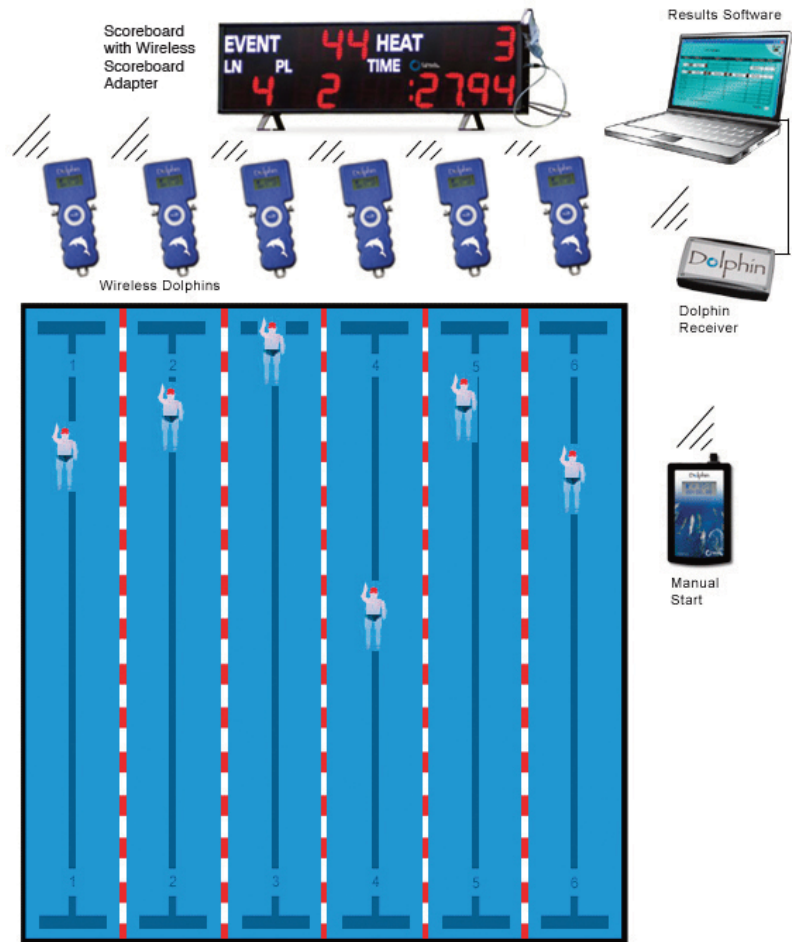




NCAA Division I Men's & Women's Championships



USA Swimming Grand Prix



Speaking as a Meet Referee for 25 years, I absolutely love the Dolphin System. After working High School and USA Swim meets where the results are available shortly after the meet ends to check over, summer league was always dreaded due to the long wait for scorers to input the times from the lane timer sheets. Our league (MSSL) requires that the meet referee and coaches sign the final score sheets. I have had to wait up to an hour for the results to be finalized. So, speaking from an officials standpoint, I love the Dolphin System.

Gail Sailors
 Meet Referee
 Maverick Summer Swim League

The Dolphin system includes:

Handheld wireless stopwatches for each lane (the system supports up to 3 lane timers per lane, and up to 10 lanes)

Starter unit (for synchronized manual or electronic starts)

Base unit, which connects via USB cable to your laptop running Hy-Tek Meet Manager

Dolphin software

Dolphin split feature

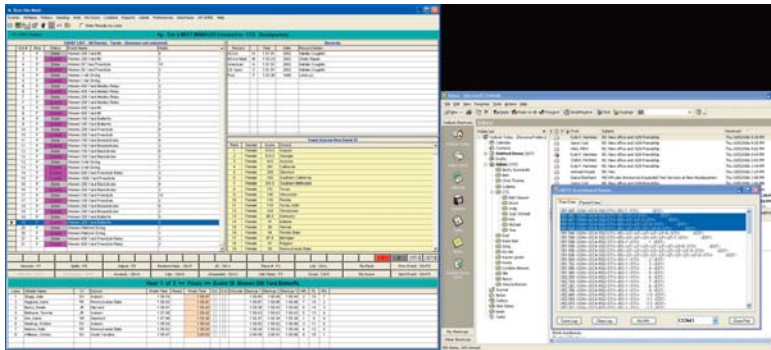
The Dolphin System now supports multiple split times (up to 10 per race) per participant for use in competition and training. Split times are displayed on the scoreboard to keep the audience involved during the course of the event. At the conclusion of the event, a log file is created and can be reviewed at a later time by the coaches and athletes.

Hy-Tek Interface

Colorado Time Systems and Hy-Tek Sports Software have partnered to provide you with a fully integrated Hy-Tek user interface, so you will not need to learn a new meet management program

“Hy-Tek is pleased to partner with Colorado Time Systems, a leader in providing timing and scoreboard technology for swimming. We believe the Dolphin wireless watch technology will not only provide a significant savings in meet administration, but just as importantly, offer timing technology to a whole new set of meet competitions. Hy-Tek is excited about the opportunity to participate in this project with CTS and we look forward to serving our mutual customers.”

Charlie Hodgson
Director of Product Development
Hy-Tek Sports Software Ltd.



Dolphin Scoreboard Adapter

The Dolphin Scoreboard Adapter allows your CTS LED numeric scoreboard to wirelessly receive results from the Dolphin system and display race data.



Dolphin Scoreboard Adapter and Portable Scoreboard

Who can use Dolphin?

Everyone. Whether you use Dolphin in competition or practice; Dolphin is an accurate, wireless, effortless timing solution. Dolphin will save you time and improve your accuracy, all by simply connecting to your laptop.

“I have three kids that swim on a summer league team, and that is where I see a real benefit of this system. Official results could be posted and ribbons printed in a fraction of the time.”

Steve Crocker, PE
Counsilman - Hunsaker Architect
World Cup Champion

Dolphin Configurations

6-lane with 1 watch per lane	WTS-DI061	8-lane with 1 watch per lane	WTS-DI081
6-lane with 2 watches per lane	WTS-DI062	8-lane with 2 watches per lane	WTS-DI082
6-lane with 3 watches per lane	WTS-DI063	8-lane with 3 watches per lane	WTS-DI083
10-lane with 1 watch per lane	WTS-DI101		
10-lane with 2 watches per lane	WTS-DI102		
10-lane with 3 watches per lane	WTS-DI103		

Each system includes the specified number of watches, base unit, starter unit, and Dolphin software

Requirements:

Hy-Tek Meet Manager, Laptop

Accessories:

Carrying Case, Lanyard, Spare Watch
Portable LED Scoreboard, Wireless Scoreboard Adapter

Specifications:

Wireless: 2.4GHz 16 channels, spread spectrum

Battery: standard 9V provides 40+ hours of operation

Physical dimensions of wireless watch:

Weight: 6.9 oz (195 grams)

Size (LxWxD): 6.06" x 2.69" x 1.06" (15.3cm x 6.8cm x 2.7cm)

RoHS compliant



U.S Patent Nos.: 7,821,876 and 8,085,623

Dolphin Packages



Dolphin packages are available for a complete solution right out of the box. Each package includes the specified number of watches plus one spare, base unit, Hy-Tek interface module, starter unit, Infinity Start System, tripod, cable set (Infinity to Dolphin), Portable scoreboard with two line display (event/heat and lane/place/time), Wireless Scoreboard Adapter, and carrying case.

Dolphin Packages Available:

6-lane with 2 watches per lane	8-lane with 2 watches per lane	10-lane with 2 watches per lane
6-lane with 3 watches per lane	8-lane with 3 watches per lane	10-lane with 3 watches per lane